



Made in the US with German Ingenuity

## About the EAGLE 40

A new generation of luxurious horse coaches with the welfare and comfort of the horse and the distinguished equestrian in mind. The iconic bold design of the EAGLE 40 combines comfort and performance. The extra raised ceiling especially in the bunk over area provides a spacious environment for the equestrian and the horses. Thanks to Freightliner's rear twin axle air suspended axle configuration, your horses will travel under the optimum conditions during longer journeys.

The EAGLE 40 is equipped with two separate air condition systems to control the climate, one for the horse area and one for the living area.

The EAGLE 40 is accommodating up to four (4) horses with a luxurious and spacious motorhome accommodation with one slide out on a 40 foot long Freightliner M2-106 professional air suspended truck chassis. Optional a Freightliner Cascadia chassis is available.

The EAGLE 40 is an all-electric equestrian vehicle to run all appliances and heating without the need of propane gas. The living area provides extra space with the slide-out, the kitchen is fully equipped with a spacious fridge, combination convection/microwave and electric cook top. The bunk over area with extra height provides ample and comfortable sleeping space and the bathroom has a full size shower, vanity, sink and porcelain toilet.

The interior of the EAGLE 40 is appointed with maple wood, wainscot lower walls, padded vinyl walls and ceilings, tiled flooring, corian counter tops and other luxury accessories.



The Freightliner M2-106 chassis is designed for optimum power and performance with 350HP / 1,150 lb-ft and Allison transmission.

Optional, the EAGLE 40 is available on a Freightliner Cascadia chassis with staggering 600HP / 1,850 lb-ft.

EAGLE 40 features and advantages:

- Safety and protection of a professional grade Freightliner truck chassis
- Smooth ride with air-suspended suspension
- Two ramps – one in the rear, one on the side - for the safe and easy loading and un-loading of your valuable horses without the need to turn the horses
- Both ramps have side guards to guide the horses safely up and down the ramps
- Horses are traveling comfortable in a reverse slant load configuration – during stopping the horses can absorb the braking forces easily by leaning with their rear against the wall and not getting pushed against a breast bar



Equi-Flyer Horse Transporters LLC, Colorado, [equiflyer@gmail.com](mailto:equiflyer@gmail.com), (720) 990-1238



Made in the US with German Ingenuity

- Thanks to the reverse slant load configuration, the horses facing always away from the busy traffic side for a calmer and more relaxing ride
- Tack room located between living area and horse area separated by walls
- Removable saddle trunk cart for saddles, bridles and accessories – automatically pulled onto the horse box and easily rolled into the show barn
- Large skylights and large sliding windows for a bright and airy environment
- Air-conditioned horse compartment
- Access from the motorhome area to the horse section
- Dimmed night lights for the comfort of the horse
- Easy access hay storage
- Storage for blankets etc.

EAGLE 40 specifications:

Cabin Area:

- One slide-out with tri fold sofa with hide a bed
- Pedestal sofa table
- 15,000 Watt Onan generator
- 3,000 Watt inverter
- Removable shore cord
- Hydraulic leveling system
- Two 16 ft awnings
- Keyless entry
- Heated holding tanks
- Exterior lights
- Remote cameras (horse area & rear)
- Thermal pane windows
- Surround sound system with Bluetooth
- Large refrigerator
- Electric cook top
- Convection / microwave
- Corian counter tops

- Tiled kitchen backsplash
- Maple wood cabinets
- Wainscot walls
- Padded vinyl walls
- Padded vinyl ceilings
- Tile flooring
- Hydronic heating system
- Three air conditioning units

Horse Area:

- Separate air condition unit
- Dimmed night lights for the comfort of the horse
- Spray in bed liner
- Rubber flooring
- Camera system
- Stainless steel dividers
- 1 x rear ramp with spring mechanism
- 1 x side ramp with spring mechanism
- Both ramps have side guards to guide the horses safely up and down the ramps
- Multiple large windows
- Skylight with fan
- Easy access hay storage
- Storage for blankets etc.

Exterior:

- Large tack locker including saddle racks and bridle hooks and large area for other items
- LED day running lights
- Full body styling kit with integrated highline reverse camera
- Parking sensors
- Alloy Wheels
- Trailer hitch

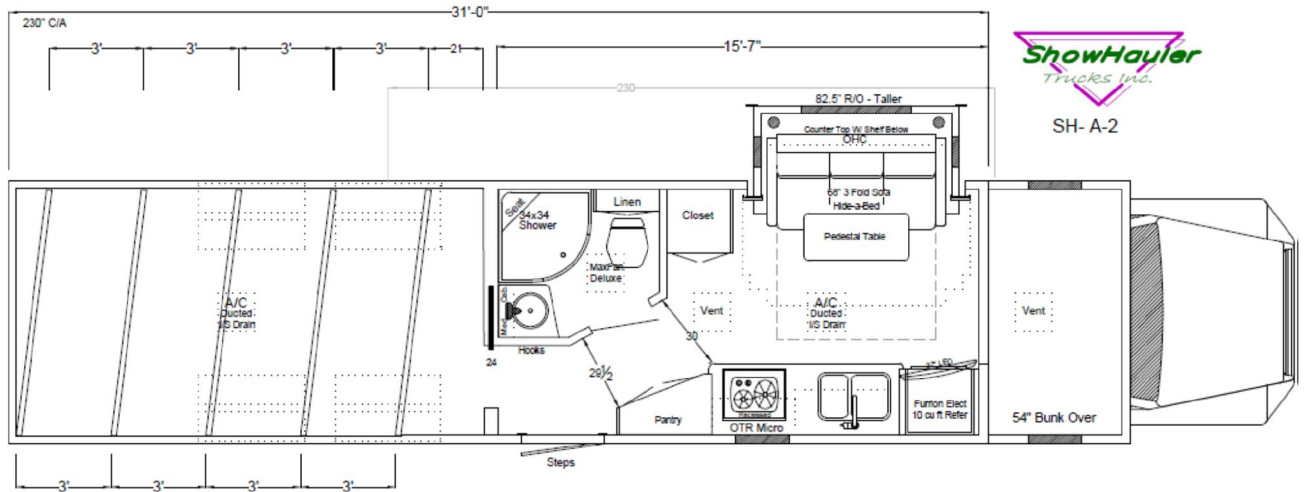


Equi-Flyer Horse Transporters LLC, Colorado, [equiflyer@gmail.com](mailto:equiflyer@gmail.com), (720) 990-1238

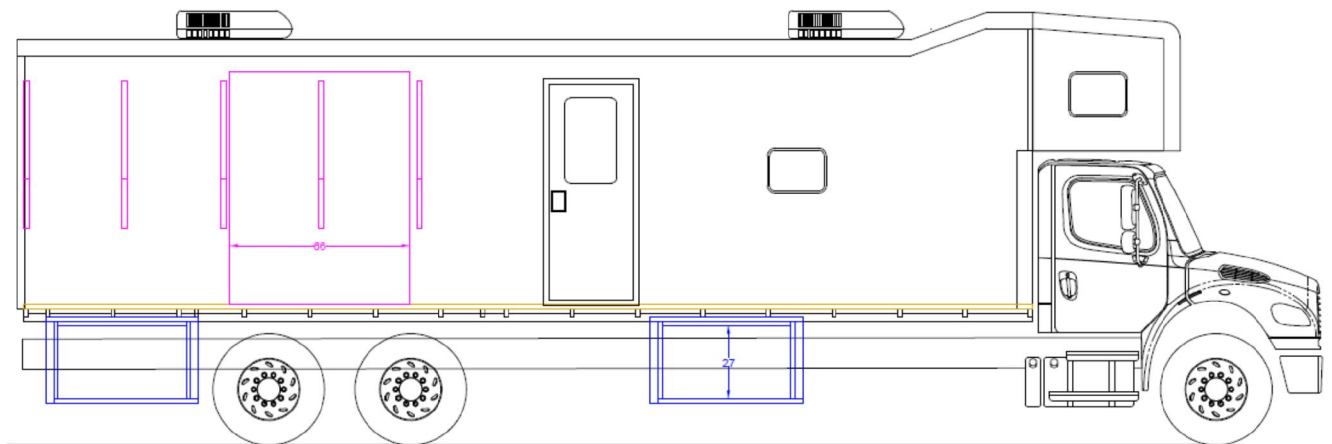


Made in the US with German Ingenuity

### EAGLE 40 Floor Plan



### EAGLE 40 Side View



Equi-Flyer Horse Transporters LLC, Colorado, [equiflyer@gmail.com](mailto:equiflyer@gmail.com), (720) 990-1238